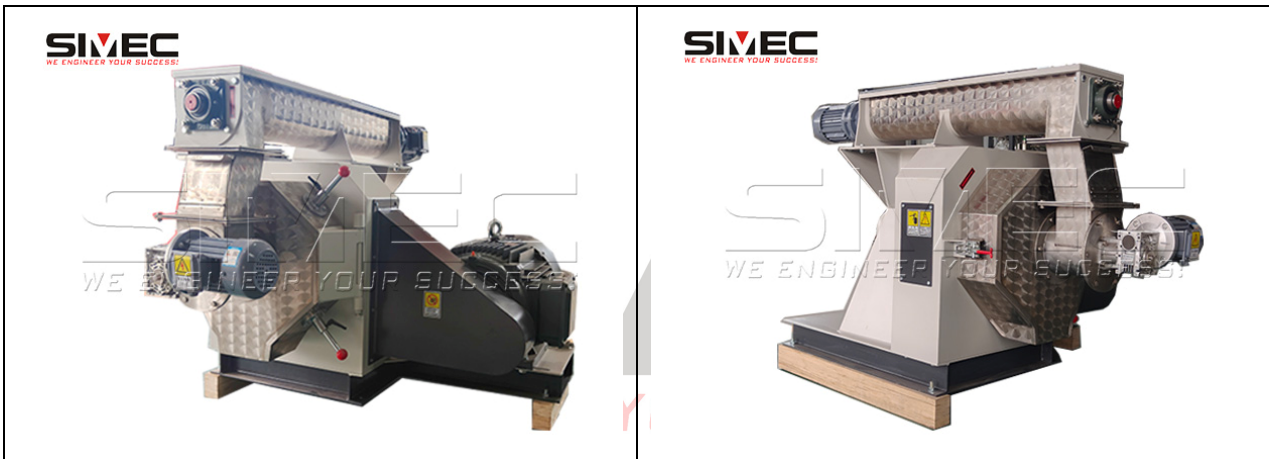


## SPM250 BIOMASS PELLET MILL

### Technology introduction:

The SPM250 biomass pellet mill is engineered for bench-scale production, pellet formulation R&D and household applications. The pelletizer consists of a screw feeder, a force feeder, machine frame, belt transmission system, ring die and adjustable press roller assembly. The screw feeder, force feeder and pelletizing chamber are all made of stainless steel.

The SPM250 biomass pellet mill is applicable to various agricultural and forestry residues, including wood sawdust, sugarcane bagasse, peanut shell, coffee parchment, rice husk, crop straw and more. Raw materials enter the rotating feeding tray through the inlet. Driven by centrifugal force, materials are thrown evenly onto the inner wall of the ring die and form a uniform annular material layer. The material is then conveyed to the contact surface between ring die and press roller. Under strong extrusion, materials are extruded into cylindrical pellets through die holes, and finally cut into uniform-length pellets by the fixed cutter.



### Technical parameters:

Model: SPM250  
Screw Feeder: 0.75 kW  
Force Feeder: 0.37 kW  
Main Motor: 22 kW  
Diameter of Ring Die: 250 mm  
Capacity: 100-200 kg/hour  
Overall Dimensions: 1300 x 1250 x 980 mm  
Weight: 600 kg

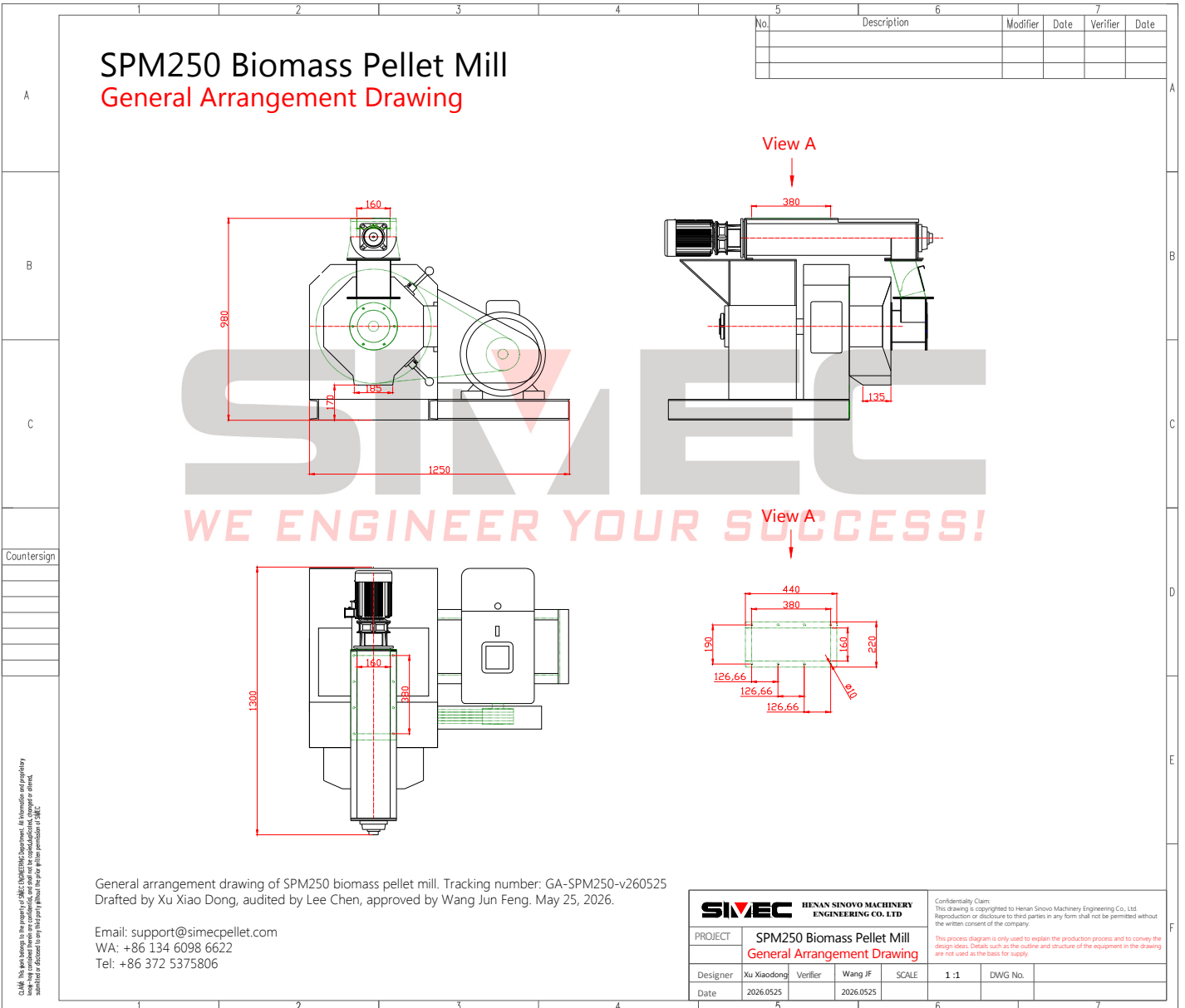
### Technical features:

1. Main shaft and hollow shaft are forged from premium materials and processed by high-precision CNC machining.
2. Stainless steel ring die is fabricated with advanced technology for extended service life.
3. High torque and high compression design ensures superior pellet forming quality.
4. Pulley replacement enables rotational speed adjustment to adapt to diverse raw materials and optimize pellet quality.
5. Optimized roller structure lowers operating temperature and adopts double sealing design.

# HENAN SINOVO MACHINERY ENGINEERING CO., LTD



## General arrangement drawing:



Technical specifications are subject to change without notice in the future.

For more information, please contact SIMEC.

Email: [info@simecpellet.com](mailto:info@simecpellet.com) | Tel: +86 372 5375806 | WA: +86 131 9350 3899

\*Copyright of the contents and photos in this brochure belongs to SIMEC.

\*We reserve the right to make changes in technical aspects, material and specifications without prior notice.

WA: +86 131 9350 3899

Tel: +86 372 5375806

Email: [info@simecpellet.com](mailto:info@simecpellet.com)

The contents of this catalogue are allowed to be downloaded and copied, but modification is prohibited.